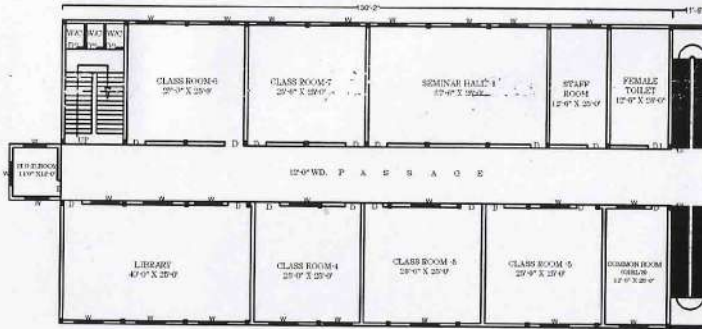
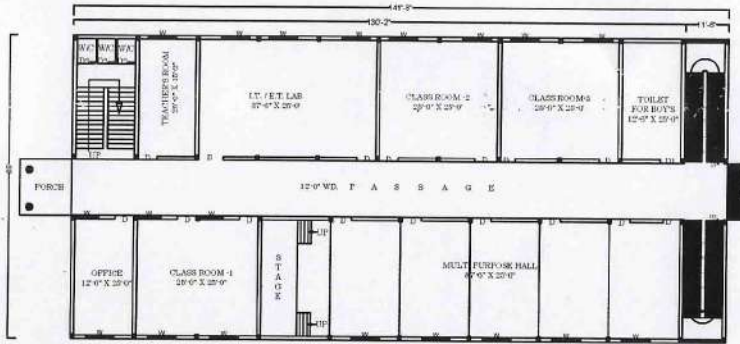
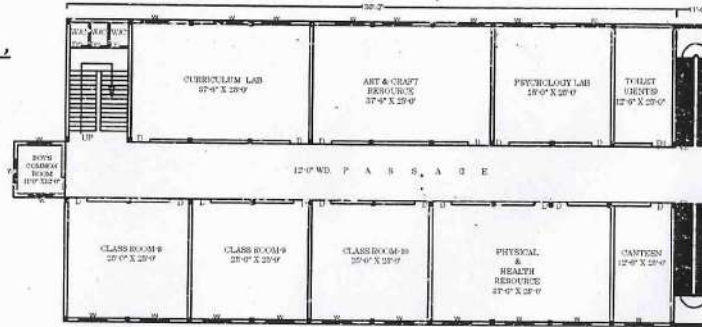
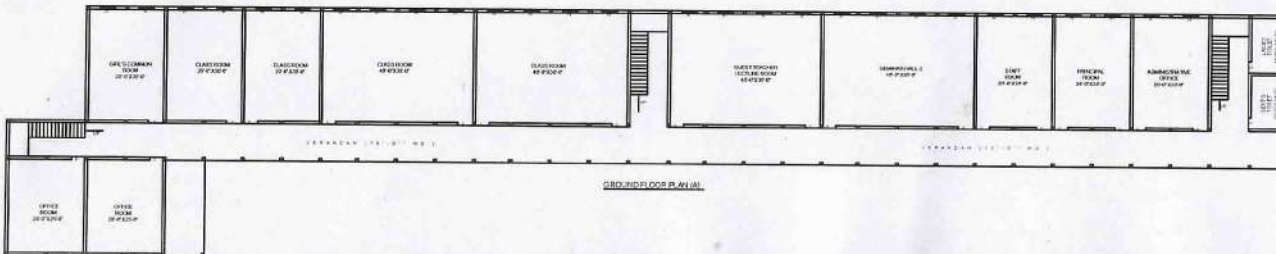
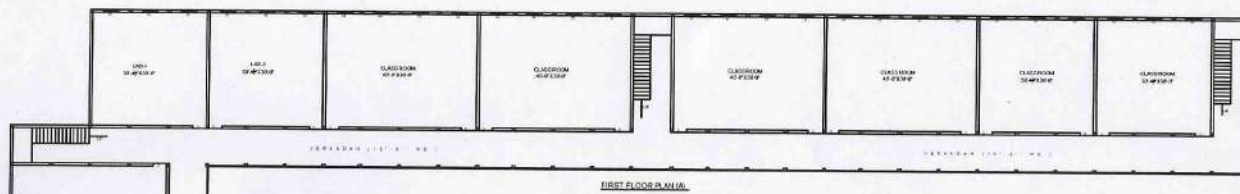


**COMPOSITE BUILDING PLAN FOR GOPALJI MAHAVIDYALAYA,  
(B.A. B.ED. & D.EL.ED.)  
AT ARAZI NO. -142 S, 143 S, 149 S  
MAUJA/ VILLAGE- KUWAPIPAR, (REOTI),  
TEHSIL - BANSDIH, DISTT. - BALLIA (U.P.)**



स्वीकृत  
भालका देवी  
प्रधान  
श्री ०० - विद्युनपुरा  
पि० अ० - रेवती, बलिया



AREA ANALYSIS	
1	TOTAL PLOT AREA - 17630.00 SQM.
2	COVERED AREA OF BLOCK (A)
	ON G.F. - 1382.81 "
	ON F.F. - 1382.81 "
	TOTAL - 2765.62 "
3	COVERED AREA OF BLOCK (B)
	ON G.F. - 868.02 "
	ON F.F. - 868.02 "
	ON S.F. - 868.02 "
	TOTAL - 2604.06 "
4	TOTAL COVERED AREA (A+B) - 5369.68 "

SCHEDULE OF OPENING ETC.	
1	D DOOR - FLUSH - DOOR - 4'-0"X7'-0"
2	DI " - " - 3'-6"X7'-0"
3	W WINDOW - BAYS - WINDOW - 6'-0"X4'-0"
4	W1 WINDOW - BAYS - WINDOW - 5'-0"X4'-0"
5	S/C IN STAIR CASE TREAD - 12"
	RISE - 6"

SCALE	DIRECTION
1" = 16'-0"	N

SIGN. & SEAL OF MANAGER

DRAWN BY

(R.K. VASTAL) Draughts Man (C) Lic No-6/90-R.A Ballia (U.P.)





 गोपाल जी महाविद्यालय, रेवती-हरियाणा  
शिक्षा संकाय















# CURRICULUM LAB



